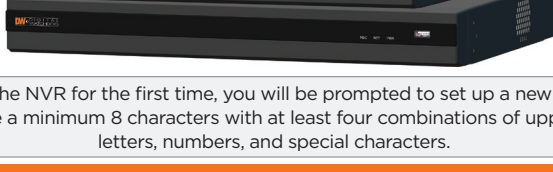


VMAX® A1 G4™

Universal HD over Coax® DVRs

4-Channel	8-Channel	16-Channel
DW-VA1G44	DW-VA1G48	DW-VA1G416
DW-VA1G442T	DW-VA1G482T	DW-VA1G4162T
DW-VA1G444T	DW-VA1G484T	DW-VA1G4164T
DW-VA1G446T	DW-VA1G486T	DW-VA1G4166T
DW-VA1G448T	DW-VA1G488T	DW-VA1G4168T
DW-VA1G4410T	DW-VA1G4810T	DW-VA1G41610T
DW-VA1G4412T	DW-VA1G4812T	DW-VA1G41612T
DW-VA1G4416T	DW-VA1G4816T	DW-VA1G41616T
	DW-VA1G4820T	DW-VA1G41620T
	DW-VA1G4832T	DW-VA1G41632T



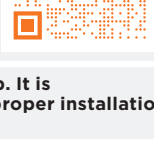
When logging into the NVR for the first time, you will be prompted to set up a new password. The new password must include a minimum 8 characters with at least four combinations of uppercase and lowercase letters, numbers, and special characters.

WHAT'S IN THE BOX

Quick start guide and download card		1 set	DC 12V adapter and power cable (*4-channel models do not come with power cable)		1 set
USB mouse		1	Rubber mounts - 4 pcs		1 set

NOTE: Download all your support materials and tools in one place.

- Go to: <http://www.digital-watchdog.com/resources>
- Search your product by entering the part number in the **‘Search by Product’** search bar. Results will populate automatically based on the part number you enter.
- Click **‘Search’**. All supported materials, including manuals and quick start guide (QSGs) will appear in the results.



Attention: This document is intended to serve as a quick reference for initial setup. It is recommended that the user read the entire instruction manual for complete and proper installation and usage.

STEP 1 – CONNECTING THE DVR

- Mount and install all necessary cameras and external devices. Refer to their individual manuals for additional information.
- The DVR supports the following analog signals:
 - HD-Analog
 - HD-TVI
 - Standard analog signal up to 960H

The DVR supports cameras up to 5MP (4K for 8/16CH models) in resolution. Please refer to the product’s data sheet and full manual for recording specifications per product.

- The DVR supports automatic signal detection. This means you do not have to perform any additional steps to assign signals to each BNC input. The DVR will detect the proper signal automatically.
- Place the DVR in its final position. See installation tips below.
- Connect all necessary cables to the DVR.
- Connect the DVR to an appropriate power supply.
- The DVR will boot up automatically.

Model	Power consumption
DW-VA1G44	DC12V, 24W, 2A
DW-VA1G48	DC12V, 48W, 4A
DW-VA1G416	DC12V, 48W, 4A

SAFETY TIPS

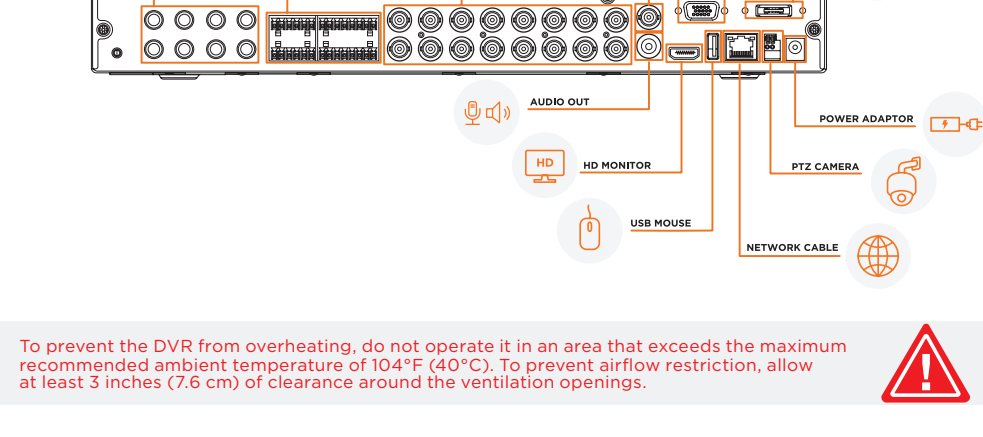
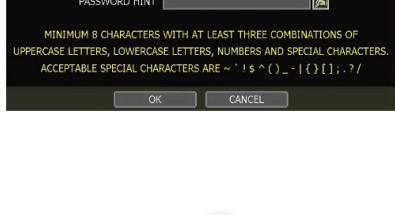
- Make sure the cameras and the monitors are properly connected to the DVR.
- The DVR should be placed in a dust and moisture free environment. It must never be directly exposed to sunlight. A room temperature is highly recommended to reduce the chance of overheating, (room temperature is considered as 68-78°F), which may cause the DVR to become unstable.
- During the boot up process, the DVR should not be interrupted by pressing any buttons on the mouse. Do not unplug the power adapter or turn the DVR off during the boot up process.
- A UPS (uninterrupted power supply) is highly recommended to prevent damage to the DVR during a power outage.

NOTE: HD Monitor output and VGA output cannot be used at the same time for dual monitoring.

STEP 2 – POWERING UP THE DVR

When the DVR boots up, it will be in protective mode and the password setup screen will appear.

- You will be asked to setup a new password. The password must be a minimum of eight (8) characters with at least four (4) combinations of upper-case letters, lower-case letters, numbers, and special characters.
- When the DVR boots up for the first time, you will be guided through the startup wizard.

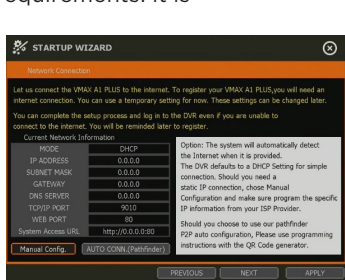


To prevent the DVR from overheating, do not operate it in an area that exceeds the maximum recommended ambient temperature of 104°F (40°C). To prevent airflow restriction, allow at least 3 inches (7.6 cm) of clearance around the ventilation openings.



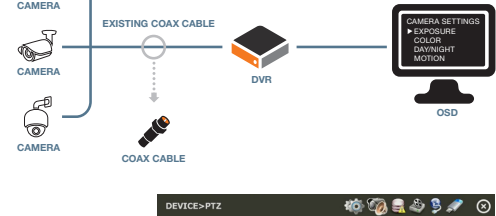
STEP 3 – STARTUP WIZARD

- Follow the startup wizard’s instructions to setup the DVR’s basic settings, including language, date/time and network. **You may not need to change any default settings to properly set up your system.** At any time, you can skip steps, go back, or exit the wizard and setup the DVR manually.
- Set the DVR’s network settings to match your network’s requirements. It is recommended to set the network type to “AUTO CONN.” and let the DVR auto-detect the network’s settings. Then, change the type to static. Please contact your network administrator for additional information. Press “APPLY” to save and “NEXT” to move to the next step. Adjust the DDNS settings as needed, or refer to the PathFinder™ option instead after initial setup. See STEP 6 - MOBILE APP REMOTE MONITORING.
- If this is your first time powering up the DVR, You are encouraged to use the setup wizard. If you prefer to manually go through the DVR’s settings to your preference, you can exit the setup wizard at any time.



STEP 4 – UTC AND PTZ CAMERA CONTROL

The DVR supports complete camera control via the coaxial connection (UTC). There is no need for an additional RS485 connection between the camera and the DVR in order to control the camera. This feature must also be supported on the camera’s side.



To add a UTC or PTZ camera:

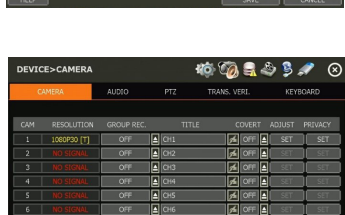
- Right-click anywhere on the screen and go to “MENU” > “DEVICE” > “PTZ”



- Camera type will be auto-detected and displayed under the camera tab. Protocol should match the camera type detected.
 - HD-A(C) -> legacy HD-Analog signal type camera.
 - HD-A/HD-TVI -> HD-Analog signal type camera.
 - HD-TVI -> HD-TVI signal type camera (DVR default signal type).

NOTE: If you are connecting a camera via UTC protocol, baudrate and address settings will be disabled.

- To control the camera’s menu and settings, press the “PROGRAM” button under the “CONTROL”. See user manual for more information.

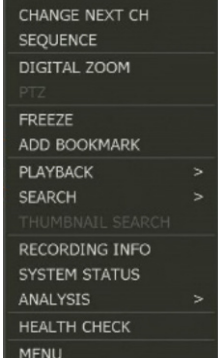
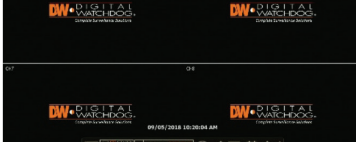


STEP 5 – MONITOR YOUR SYSTEM

- Navigation – use the included USB mouse to navigate around the DVR’s monitoring and Setup pages.



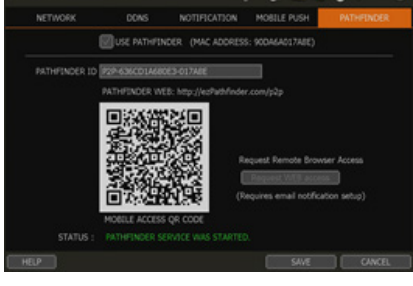
- To access the menu bar – move the mouse’s cursor to the bottom of the display area to show the menu bar. You can also display it constantly by pressing the pin icon on the right side.
- To access the quick menu options, right-click anywhere on the screen. This will take you to the quick menu options, which include:
 - “DISPLAY MODE” Options
 - “DIGITAL ZOOM”, “PTZ” control and “FREEZE” image (on supported cameras)
 - “ADD BOOKMARK” video
 - Instant “PLAYBACK”, “SEARCH” and “THUMBNAIL SEARCH”
 - Recording status and analysis system monitoring
 - Access to the “HEALTH CHECK” and open the main “MENU”.



STEP 6 – MOBILE APP REMOTE MONITORING

You can monitor your system from DW’s Mobile Plus™ app with no need for complicated port forwarding! To enable the QR code on your DVR:

- Right-click anywhere on the DVR’s screen and go to “MENU” > “NETWORK” > “PATHFINDER™”
- Check the box next to ‘USE PATHFINDER’. Click Save.
- A mobile access QR code will appear on the right side of the screen. Status at the bottom of the screen should say “PATHFINDER™ SERVICE ACTIVATED”.



To view the DVR on your mobile app:

- Go to the Google Play Store or Apple App store and download the latest DW Mobile Plus™ app.
- To add a new VMAX® A1 Plus™ device- Launch the DW Mobile Plus™ application on your Android® or Apple® smart-phone or tablet.
- Go to the Site menu to register a new site with the QR code scan.
- Press QR icon next to the Host field.
- Move the camera angle to QR code on DVR. The camera will capture the QR code automatically once all four corners of the code are registered in the camera’s frame properly.
- Once the camera registers the QR code from the DVR, the IP address field will show the DVR’s MAC address information.
- Complete the new device’s registration information by adding the device name, port number, user-name and password. Select “SAVE” to complete the registration.
- The new site will appear in your sites list.

